

## Product Description

### BRCA1(1720-1863)

**Catalog Number:** 26351-2

**Gene Symbol:** BRCA1, BRCC1, IRIS, PNCA4, PPP1R53, PSCP

**Description:** Anti-BRCA1(1720-1863) Mouse Monoclonal Antibody

**Background:** BRCA1 is normally expressed in cells of breast and other tissues, where it helps repair damaged DNA or destroy cells if DNA cannot be repaired. It is involved in the repair of chromosomal damage with an important role in the error-free repair of DNA double-strand breaks. If BRCA1 itself is damaged by a BRCA1 mutation, damaged DNA is not repaired properly, and this increases the risk for breast cancer.

**Immunogen:** Purified BRCA1(1720-1863) protein, human origin.

**Tested Applications:** ELISA, WB, IF, IHC

**Recommended Dilutions:**

ELISA:	1:1000-1:2000
WB:	1:500-1:1000
IF:	1:50-1:100
IHC:	1:50-1:100

**Concentration:** 1 mg/ml

**Host:** Mouse

**Clonality:** Monoclonal

**Isotype:** IgG

**Purity:** Purified from ascites

**Format:** Liquid

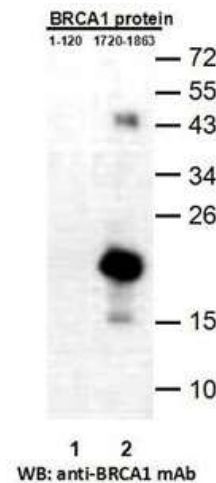
**Preservative:** No

**Constituents:** PBS (without Mg<sup>2+</sup> and Ca<sup>2+</sup>), pH7.4, 150 mM NaCl, 50% glycerol

**Species Reactivity:** Recognizes BRCA1(1720-1863) of vertebrates.

**Storage Conditions:** Store at -20°C. Avoid repeated freezing and thawing

**Western blot:**



**Western blot analysis of recombinant BRCA1 (1-120) and BRCA1 (1720-1863) proteins.**

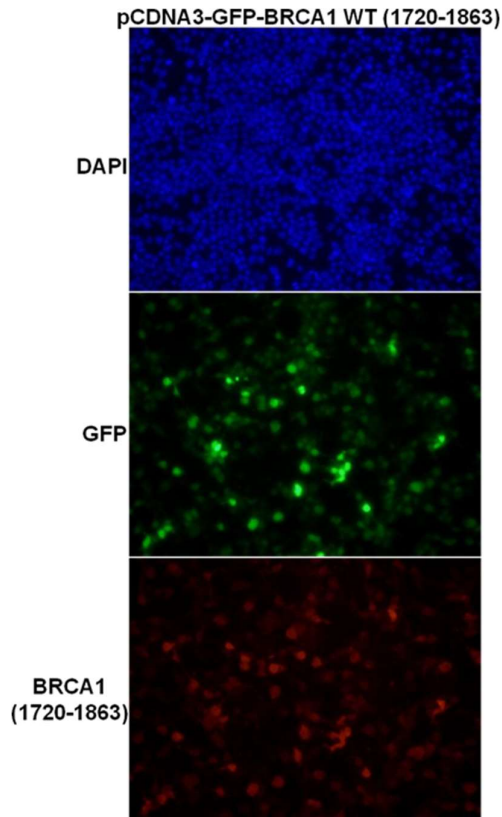
Purified His-tagged BRCA1 (1-120) protein (lane1) and corresponding His-tagged BRCA1 (1720-1831) (lane2) were blotted with anti-BRCA1 (1720-1863) monoclonal antibody (Cat. # 26351-2).

FOR RESEARCH USE ONLY. NOT FOR DIAGNOSTIC APPLICATIONS

A helping hand for your research

---

## Immunofluorescence:



### Immunofluorescence of cells expressing BRCA1(1720-1863) protein with anti-BRCA1 (1720-1863) antibody.

HEK293T cells were transfected with pCDNA3-GFP-BRCA1(1720-1863) plasmid, then fixed and stained with anti-BRCA1 (1720-1863) monoclonal antibody (Cat. # 26351-2).

---

FOR RESEARCH USE ONLY. NOT FOR DIAGNOSTIC APPLICATIONS